

AeroGarden™

Cherry Tomato



Tending & Harvesting Guide

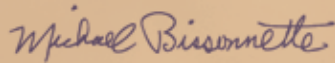
Planting Date: _____

Welcome

Thank you for your purchase of our AeroGarden. We have spent years developing and refining our technology to create a growing system that assures you will have a pleasurable and successful year-round gardening experience.

I sincerely hope you enjoy your AeroGarden and sharing your healthy harvest with your family and friends.

Best Regards,



Michael Bissonnette
Founder and CEO
AeroGrow International, Inc.



CONTENTS

Your AeroGarden

AeroGarden Features	3
Seed Kit Features	4
Smart Garden Control Panel Features	4

Tending Your Garden

Tomato Garden Timeline	5
Remove Domes	7
Thin Plants	8
Add Water	9
Feed Garden (Add Nutrient Tablets)	10
Raise Lights	12
Prune Tomato Plants	14
Pollinate Tomato Flowers	17
Keep Your Tomato Garden Healthy	18
Plant Problems and Remedies	19

Harvest Your Garden

Optimal Harvesting	22
Tomatoes Galore!	23

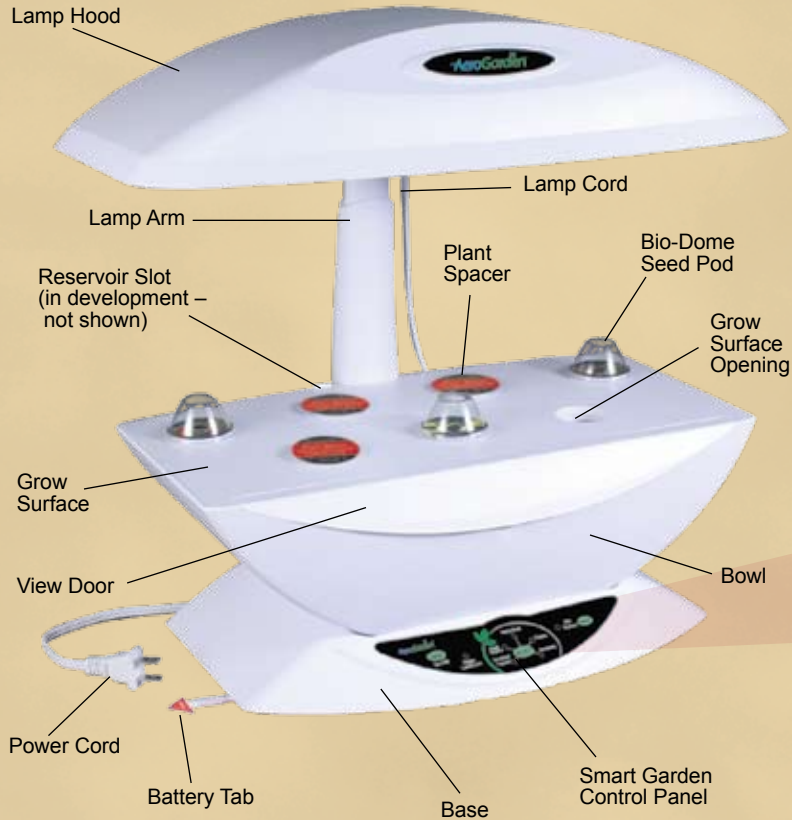
Appendices

Reminders About Planting Your Garden	25
Questions and Answers About Your Nutrients	27
Questions and Answers About Your Lights	28
Setting Your Light Timer	29
Troubleshooting	31
Tomato Garden Checklist	35
Preparing for Your Next Garden	36

Whoever
plants a garden
plants happiness.

– CHINESE PROVERB

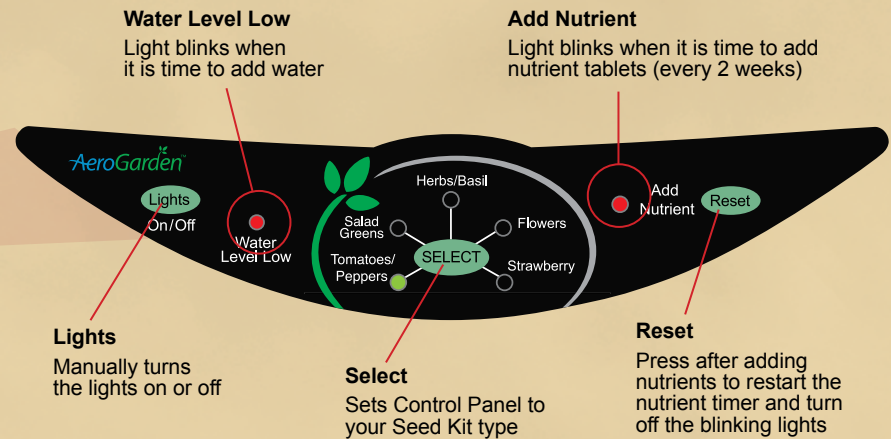
AeroGarden Features



Seed Kit Features



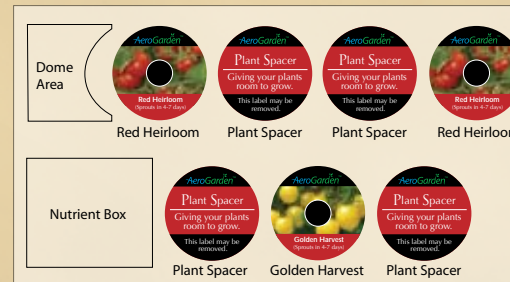
Smart Garden Control Panel Features



Tending Your Garden

A little bit of care for your Garden will ensure rapid growth and bountiful harvests. You will start to see sprouts in a few days. In a few months, you will experience the transformation of your seeds into sweet, ripe, juicy tomatoes.

Please take a moment to review this section shortly after planting your Garden (see page 25 for *Reminders About Planting Your Garden*).



Check that your *Bio-Dome Seed Pods* are in the same position on the *Grow Surface* as they appear in the *Seed Kit Tray*. We find that this arrangement gives the plants optimal spacing and light exposure.

Tomato Garden Timeline

Your tomatoes will germinate in just a few days. You will see them grow very quickly after that.



After 2 weeks



After 4 weeks



After 8 weeks



After 14 weeks



Remove Domes

- A few days after planting your AeroGarden, tiny plants will appear through the center hole in the *Label* on each *Seed Pod*.

When this occurs, remove the *Domes* from each *Seed Pod* and discard or recycle. Do not remove the label.



- Remove the *Domes* only from *Seed Pods* with emerging plants.
- Leave the *Plant Spacers* in the *Grow Surface*. These provide room for your tomato plants to grow and reduce algae growth.



Each *Seed Pod Label* indicates the number of days until your seeds sprout.

Note: Tomato seeds need temperatures over 60°(F) to sprout and prefer temperatures between 70-80°. Be sure to place your AeroGarden in a warm area and away from air conditioning vents.

! Never remove the labels. They promote germination, decrease algae growth and identify your plants.

Thin Plants

- When your tomato plants are about 1" tall, check each *Seed Pod* for multiple tomato plants. Using scissors gently snip the smallest plants at the base of the stem, leaving ONE healthy tomato plant in each *Seed Pod*.
- Thinning seedlings ensures that the remaining plant in each *Seed Pod* will have room to grow, get enough nutrients and water, and produce many, many tomatoes.



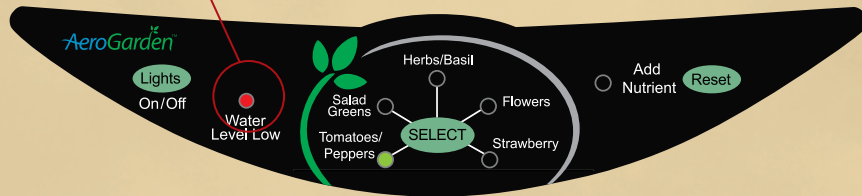
! Be sure to cut, not pull, the extra seedlings to avoid damaging the roots of the strongest tomato plant in each *Seed Pod*.

Add Water

- When additional water is needed, the “Water Level Low” light on the *Control Panel* will blink. Add water to raise the level up to “*Fill To Here*” inside the *Bowl*.
- It is okay to add water up to “*Fill To Here*” before the “Water Level Low” light blinks.
- When your tomato plants mature, they may need water as often as twice a week. Be sure to check the “Water Level Low” light regularly.



Smart Garden Control Panel



- Use room-temperature water. Very hot or very cold water will hurt your plants.
- We recommend using municipal tap, bottled or purified water. Well or softened water **SHOULD NOT** be used because the extra minerals in these sources may be harmful to aeroponically grown plants.
- **NEVER** mist the plants in your AeroGarden. *Water could shatter the Grow Bulb glass.*

Feed Garden (*Add Nutrient Tablets*)

Every 2 weeks, both the “Add Nutrient” and “Water Level Low” lights will blink on and off.



Use “**Growing Nutrients**” and begin alternating between **BASIC** and **QUICK RINSE & REFILL** feeding steps described below.

BASIC STEPS:

1st, 3rd, 5th, 7th and 9th Feeding with “Growing Nutrients”

- 1 Add 2 nutrient tablets from the “Growing Nutrients” bag, reseal the bag and press the *Reset* button.
- 2 Add water to raise the water level up to “*Fill To Here*” in the *Bowl*.
- 3 Cross off “Basic” box on *Feeding Schedule* label on “Growing Nutrients” bag.



Cherry Tomato Growing Nutrients
FEEDING SCHEDULE
Cross off one box after each feeding.

1st	2nd	3rd	4th	5th	6th	7th	8th	9th	10th
<input checked="" type="checkbox"/>	<input type="checkbox"/>	<input type="checkbox"/>	<input type="checkbox"/>	<input type="checkbox"/>	<input type="checkbox"/>	<input type="checkbox"/>	<input type="checkbox"/>	<input type="checkbox"/>	<input type="checkbox"/>
Basic & Refill	Rinse & Refill	Basic & Refill	Rinse & Refill	Basic & Refill	Rinse & Refill	Basic & Refill	Rinse & Refill	Basic & Refill	Rinse & Refill

For “Basic” and “Rinse & Refill” steps, see “Add Nutrient Tablets” in the *Tending & Harvesting Guide*.

QUICK RINSE & REFILL STEPS:

2nd, 4th, 6th, 8th and 10th Feeding with “Growing Nutrients”

- 1 Carefully remove the *Bowl* from the *Base* and bring it to a sink.



(Continued on next page)

Feed Garden *(Continued)*

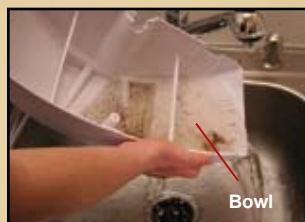
- 2 Remove the *Grow Surface* from the *Bowl* and place on a counter near the sink.

(Hint: Lift the View Door and slide one hand into the Bowl. Don't worry if you gently tear some roots.)



- 3 Empty contents of *Bowl* into sink and rinse *Bowl*. (Use only water.)

- 4 Fill *Bowl* with **room-temperature** water up to "Fill To Here" and set *Bowl* on counter.



- 5 Place *Grow Surface* back on *Bowl*.

- 6 Carefully replace *Bowl* onto *Base*.

- 7 Add 2 nutrient tablets from the "Growing Nutrients" bag, reseal the bag and press the *Reset* button.

- 8 Cross off "Rinse & Refill" box on *Feeding Schedule* label on "Growing Nutrients" bag. (See sample label on page 10.)



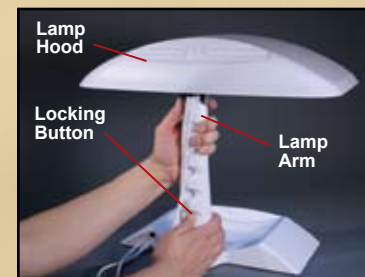
Note: We recommend checking for bugs every time you add nutrients. See Troubleshooting on page 32 of this guide for details.

Raise Lights

As your plants begin to grow, leave approximately 1-2 inches of space between the top of plants and the lights.

To raise the lights:

- 1 Unplug the AeroGarden (the backup system will save your settings).
- 2 Carefully remove the *Bowl* from the *Base* and set aside.
- 3 Turn the AeroGarden around so the back of the *Lamp Arm* is facing you.
- 4 Firmly hold the lower section of the *Lamp Arm* and push in the *Locking Button* on the *Arm*. With your other hand, grasp the silver ring at the top of the *Arm* (where the *Lamp Hood* attaches to the *Arm*). Pull up firmly on *Lamp Hood* until the *Locking Button* becomes visible in the next hole.



Move Locking Button up only one hole at a time. The lights need to be close to the plants for optimal light intensity.

- 5 Replace the *Bowl* onto the *Base* and plug in your AeroGarden.
- 6 Lift the *View Door* to check that the water is flowing. If not, refer to *Troubleshooting* on page 33 of this guide.

! If the *Grow Bulbs* are too close to the plants, the leaves may brown and burn. If they are too far away, your plants will "stretch" towards the light and look floppy and unhealthy.

Prune Tomato Plants

Pruning 4- to 5-Week Old Plants

About 4 to 5 weeks after planting your Garden, it is time to prune to strengthen the main stem and encourage the plant to branch out. A strong plant with many branches will be able to bear the weight of many tomatoes without breaking or tipping over.

- From the base of the plant, follow the main stem up past the first 5 branches.



- Cut the main stem just above the 5th branch.



The photo at left shows how your plant should look after it has had its first pruning.

Pruning to Control Horizontal Spreading (Ongoing)

To optimize the growth of your tomato plants and ensure strong plants and bountiful harvests, you'll need to occasionally prune branches that are growing outside the reach of the *Lamp Hood's* lights.

The picture at right shows a bird's eye view of plants that need pruning. *The circled branches hang too far over the edge of the Grow Surface and do not receive enough light from the Lamp Hood to be productive.*

- Use scissors to cut branches that hang over the edge of the *Grow Surface*. Make your cut so that the branch is even with the *Grow Surface*.



*The photo at right shows the same Garden after pruning. The branches no longer hang over the edge of the *Grow Surface*.*

(Continued on next page)

Prune Tomato Plants *(Continued)*

Pruning to Control Plant Height *(Ongoing)*

Branches that touch the lights when the *Lamp Hood* is at the highest setting need to be pruned.



- Use scissors to cut branches that are growing into the lights. Follow the branch to where it meets another branch – make cut just before this junction.



Don't be discouraged if you end up cutting a branch with some flowers, or even a few small unripe tomatoes. Pruning strengthens your plants and allows your Garden to put energy into growing branches that can support many tomatoes.



The photo at right shows the same Garden after pruning. The branches are longer growing into the Lamp Hood.

Pollinate Tomato Flowers

In nature, pollination is done by the bees and the wind. Indoors, your tomato plants depend on you to pollinate them.

You will need to start pollinating your plants regularly once they begin to flower (approximately 4 weeks after planting).



- 1 Place an open hand gently inside the tomato plant branches.
 - 2 Move your hand rapidly back and forth about 10 times. This movement will spread the pollen, though you will not be able to see it moving.
 - 3 Repeat steps 1 and 2 for each tomato plant.
- Pollinate your flowering tomato plants at least every other day, and only when the lights are on.

! Hand pollinating is an important task. Tomatoes will only grow from pollinated flowers.

Keep Your Tomato Garden Healthy

Keeping a watchful eye on your Garden is not only a joy, but also a smart way to make sure your tomato plants stay healthy.

As your tomato plants age you may see some brown or yellow leaves. This is perfectly normal.

- Remove these leaves with scissors or pinch off with your fingers.
- Keep the *Grow Surface* clear of dead leaves.
- Remove dead, brown stems at the base with scissors. These older branches will not continue to produce tomatoes.



Plant Problems and Remedies

These pictures show plants that are stressed. Follow the suggestions to restore your Garden's health.



Wilted

Tomato plant is not getting enough water. Check water level.



Burned

Tomato plant is too close to the *Grow Bulbs*. Raise the *Lamp Hood*.



Curled Inside *Dome*

Dome was left on too long. Immediately remove *Dome*.



Blossoms Falling Off Plant

If you see flower blooms on your *Grow Surface*, your tomato plants are not being pollinated sufficiently. Pollinate your plants as described on page 16.

(Continued on next page)

Plant Problems and Remedies *(Continued)*

Support Tomato Plants

If you did not prune as described earlier in this Guide, you may find your plants are starting to tip over or even break due to the many juicy tomatoes now growing and ripening on the vines.

When this occurs, support your tomato plants and bring them back to the upright position by securing each plant to the *Lamp Arm* with a tie.

Suggested Materials to Use for Supporting Tomato Plants

There are a variety of materials you can use to support your tomato plants, all of which are easy to find at a local hardware store or even in your own home. Some options are shown at right.



Velcro plant ties, old stockings, or ribbon (at least 1/8 inch) will all work for securing your plants.



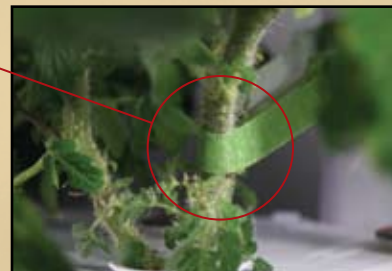
Do not use ties that will dig into (and damage) the stem, such as string or wire. Also avoid materials that stretch, such as stretch ties sold in gardening shops, as these are not strong enough to support heavily laden tomato branches.

How To Support Tomato Plants

The plant on the right is in need of support. The following steps explain how to support your plants.



- Loop a tie around the main stem at a point where it:
 - a) is strong enough not to bend or break when the tie is secured, and
 - b) stands upright when the tie is pulled towards the *Lamp Arm*.



Helpful Hint: The best way to figure out where to place the tie, is to very gently push on the main stem with your fingers, testing for strength and ability to support the plant. Typically, your tie will be no more than 2" above the base of the plant.

(Continued on next page)

Plant Problems and Remedies *(Continued)*

- Tightly loop one end of the tie two times around the *Lamp Arm*. Hold the tie in position with one hand. With the other hand, gently pull the opposite end of the tie to bring the main stem to an upright position.



- Secure the two ends of the tie to each other (in this case, we used velcro).
- If you notice other heavy branches that need additional support, secure them to the *Lamp Arm* as well.



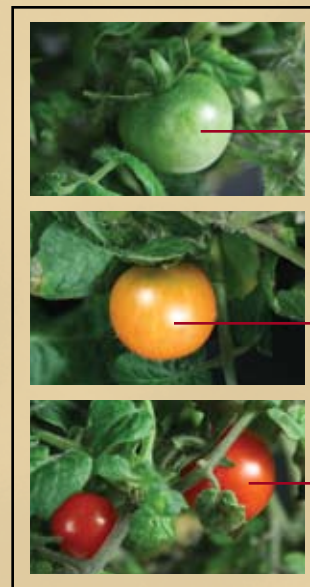
The photo at right shows the same Garden after tie supports have been added.

! Loosen or untie the supports before *Rinse & Refill Feedings* and before raising the *Lamp Hood*, to avoid damaging the plant stems.

Harvest Your Tomatoes

After approximately 10 to 12 weeks, you can begin harvesting your tomato plants!

- Pick your tomatoes gently with your fingers.
- A ripe tomato feels firm, but has a little bit of “give” when pressed.
- Ripe yellow tomatoes will still be a little green.
- Continue to hand pollinate tomato flowers.
- Harvest tomatoes just before eating for a “sun-ripened” sweet flavor.
- After harvesting your tomatoes, lower your lights, if necessary. (See “*Raise Lights*” on page 12.)

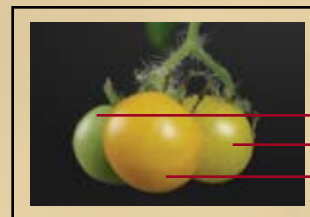


Red Cherry Tomatoes:

Under Ripe

Ripening

Ripe



Yellow Cherry Tomatoes:

Under Ripe

Ripening

Ripe



Tomatoes Galore!

- Great for snacking – right off the plant.
- For a wonderful, low-calorie tomato salad, try splashing chopped tomatoes with balsamic vinegar instead of olive oil.
- Harvest tomatoes in clusters to retain freshness if they are not going to be used immediately. If you leave the tomatoes on their stems they will continue to draw moisture and nutrients several days after they've been harvested.
- Never Refrigerate Fresh Tomatoes! Cold temperatures make the flesh of a tomato pulpy and destroy the flavor.



Herbed Tomato Pasta Salad

- 10 cherry tomatoes, quartered
- 1/4 tsp sugar
- 1/3 cup mixed, chopped fresh herbs
- 1/4 lb small pasta
(penne, macaroni, campanella, etc.)
- 1 clove garlic, chopped
- 1/3 cup extra virgin olive oil
- Salt and pepper

Stir together tomatoes, sugar and herbs in a large bowl until combined well. Cook pasta in boiling, salted water until *al dente*, then drain. Add hot pasta to tomato mixture. Cook garlic in olive oil, for 1 minute, in a small saucepan over moderately high heat. Stir. Add garlic and oil to pasta and tomatoes. Toss to combine. Season with salt and pepper. Serves 1

Fiesta Salsa

- 15 cherry tomatoes
- 1/2 medium red onion
- 1/2 green jalapeno pepper
- 1/2 lime
- 1/3 cup tomato juice
- 1/2 tsp ground cumin
- Salt and pepper to taste

Chop cherry tomatoes, onion and jalapeno pepper and combine all in a bowl. Add fresh lime juice, tomato juice, cumin and salt and pepper to taste. Mix all ingredients.
Makes 1-2 cups



Appendices

Reminders About Planting Your Garden

Please use the Quick Start Guide included in your original AeroGarden box for more detailed setup instructions. If you no longer have your Quick Start Guide, you can find a copy of it on our website at www.aerogrow.com.

Setting up Your AeroGarden

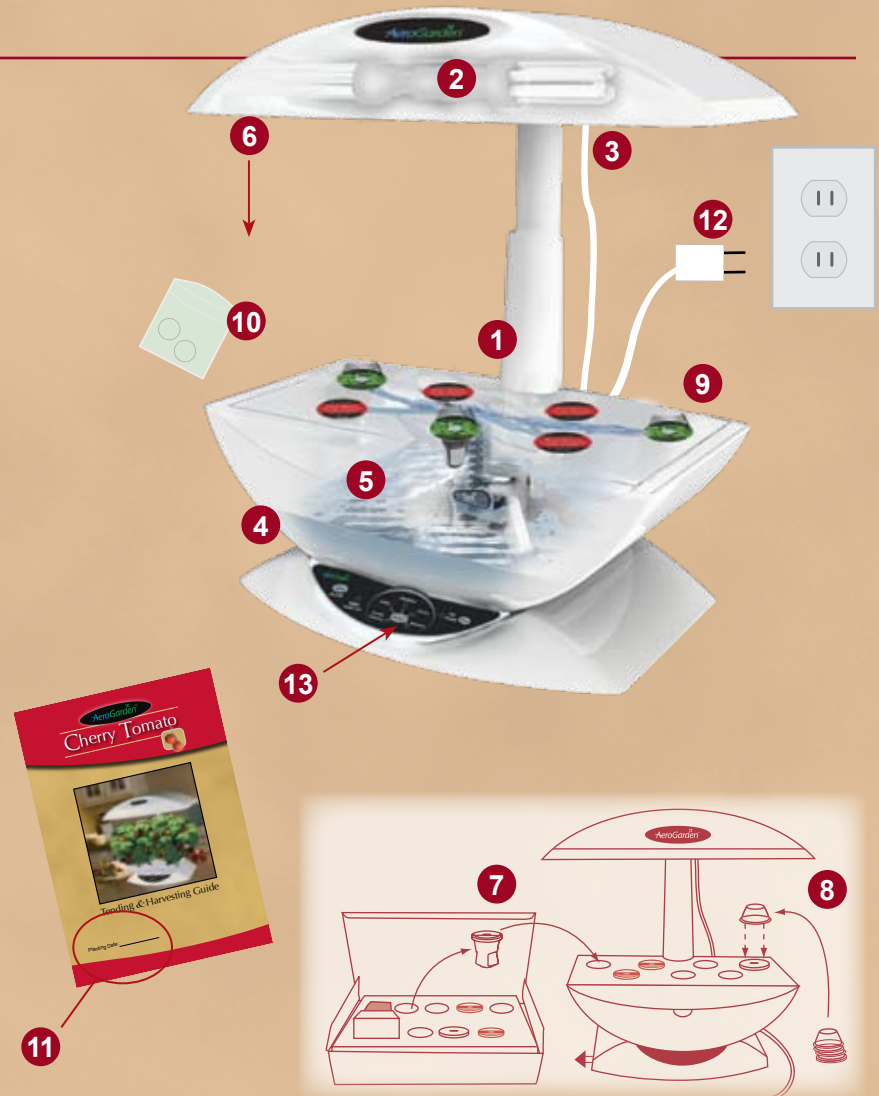
- 1 Is the *Lamp Arm* firmly inserted into the *Base*?
- 2 Are the *Grow Bulbs* firmly inserted into the sockets in the *Lamp Hood*?
- 3 Is the *Lamp Cord* plugged into the *Lamp Hood*?
- 4 Is the *Bowl* securely placed in the *Base*?
- 5 Is there water in your *Bowl* up to "Fill To Here"?
- 6 Is your *Lamp Hood* at the lowest level?
- 8 Did you put a *Dome* on each *Seed Pod*?
- 9 Are the *Seed Pods* pressed firmly into the *Grow Surface* openings (until the rim of the *Dome* almost touches the *Grow Surface*)?
- 10 Did you add 2 *Starting Nutrient* tablets from the green bag in the *Nutrient Box*?
- 11 Did you record your planting date on the cover of this guide?

Planting Your Garden

- 7 Does the *Seed Pod* arrangement in the *Grow Surface* match the layout in the *Seed Kit Tray*?

Starting Your Garden

- 12 Did you plug in your AeroGarden?
 - Is the water flowing?
 - Are the *Grow Bulbs* on?
- 13 Did you select your plant type?



Questions and Answers About Your Nutrients

What is in the nutrient tablets?

AeroGarden nutrient tablets consist mainly of mineral salts. These provide the 13 micro and macro nutrients that all plants require, in just the right proportions for your tomato plants. The tablets also contain:

- Seaweed for a boost of 70 micro nutrients and trace elements
- A buffer so you can use tap water for your plants without adjusting the pH
- A binder to hold the tablet together

Are the nutrients organic?

The AeroGarden nutrient tablets are organic, according to current AAPFCO (American Association of Plant Food Control Officials) standards.

Can I use leftover nutrient tablets from a different *Seed Kit* with my *Cherry Tomato Garden*?

No. The nutrient tablets are specially formulated for each *Seed Kit*. Using nutrient tablets from a different *Seed Kit* type may harm your tomato plants and result in less than optimal flavor and growth.

What happens if I run out of nutrients while my Garden is still growing?

You can extend the life of your garden by ordering additional nutrients. Call (800) GROW-NOW and select the Customer Service option.

Questions and Answers About Your Lights

Do I need to turn the AeroGarden lights on and off manually?

No. Your AeroGarden includes a built-in timer that turns your lights on and off at specific intervals. These intervals are designed to maximize the growth of your tomato plants. The timing system started as soon as you plugged in your AeroGarden. Every day it will automatically turn your lights on for 16 hours beginning at that time. For example, if you plugged in your AeroGarden at 7:00 in the morning, your lights will stay on until 11:00 in the evening, then automatically turn off for 8 hours, and automatically turn back on at 7:00 the next morning.

Can I change the time of day the lights go off?

Yes. To change the time your lights go off, follow the simple steps in “Setting Your Light Timer” in the next section of this guide.

Does it matter what time of day the lights go off?

No. It makes no difference to the plants when your lights go on and off. Some people like to have the lights off when they go to bed and come on in the morning when they wake up. Others prefer to use the

AeroGarden as a night light. Even if you place your AeroGarden in a sunny location, you can still set the lights to go on at any time. The natural light shining through a window is weak compared to the intense light provided by the *Grow Bulbs*.

Can I change the number of hours the lights are on and off?

Only by selecting a different plant type on the *Smart Garden Control Panel*. The “Tomatoes/Peppers” setting will keep your lights on for 16 hours and off for 8 hours, which is an ideal light cycle for rapid growth of tasty tomatoes.

Can I temporarily turn off my lights (for example, to darken the kitchen for a candlelight dinner)?

Absolutely. The “Lights” button on the *Smart Garden Control Panel* is an on/off switch. Just push and then immediately release this button to manually turn the lights off (or back on). This will not change any of the settings for your AeroGarden and your lights will turn on (or off) at the next regularly programmed time. Occasional use of this feature will not harm or slow the growth of your plants.

Setting Your Light Timer

Your Built-In Light Timer

Your AeroGarden has lights and a built-in timer that automatically provide your plants with 16 hours of “sun-light” and 8 hours of “night”, which is optimal for the healthy growth of tomatoes.

As long as your plants get this amount of light, it does not matter when the lights are turned off. You may find it convenient to have the lights go on in the morning and off at night to match your own wake and sleep schedule.

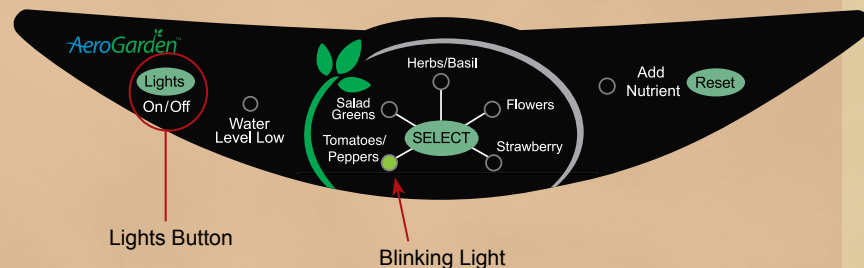
Note: If the reflection from your AeroGarden lights is visible from your bedroom, you may want to set the lights to go off about the time you usually go to bed, so as not to disturb your sleep.

5 Simple Steps...

In order to make this as simple as possible you only need to set the time you want the lights of your AeroGarden to go off (Off Time) and your built-in light timer automatically sets the On Time... nothing more for you to do.

Do the following at the time you want your lights to go off:

- 1 Decide what time of day you want the lights to go OFF.
- 2 *AT THAT TIME* check that the lights are on. If they are off, quickly press the *Lights* button and immediately release.
- 3 Press and hold the *Lights* button *until* the green light next to “Tomatoes/Peppers” starts blinking – about 5 seconds.
- 4 Release the button.
- 5 When the blinking stops (about 9 seconds), the lights will go off. Your lights are now set to go off at this time every day.



Now, each day, your AeroGarden lights will automatically

- Turn off at the time you set using the steps on the previous page
- Remain off for 8 hours
- Turn on for 16 hours

You can reset your timer as often as you want.

Note: In case of power failure, your AeroGarden has a back-up system that stores your light timer and plant selection settings. When the power is restored, your AeroGarden will go back to the Off-On cycle you have set.

Troubleshooting

What do I do when one of my *Grow Bulbs* burns out or if I lose my nutrient tablets?

Replacement parts can be ordered from our website at www.aerogrow.com. You should replace your *Grow Bulbs* after 6 months of use.

How long does the backup battery last?

The backup battery works for 6 months after activation. To replace it, use a CR2032 3-volt lithium battery.

What do I do if I want to move my AeroGarden to another location?

Go right ahead! Your AeroGarden has a factory installed back-up battery that lets you unplug it without losing any of the settings.

To move your AeroGarden, be sure to pick it up by holding the *Lamp Arm* with one hand and sliding your other hand under the bottom of the *Base*.

Why have my tomato seeds not sprouted a week after planting my Garden?

Tomato seeds need temperatures above 60°(F) to germinate (sprout) and temperatures between 70-80° are optimal. Perhaps you have placed your AeroGarden close to an air conditioning unit or a very cold window. Move your AeroGarden to a warmer location in your house. The seeds should germinate within five days.

Why do I have many flowers on my tomato plants, but not even one green tomato seven weeks after planting my Garden?

The flowers on your tomato plants are not pollinated. Make sure to hand pollinate your flowers every other day, as described on page 16 of this guide.

What do I do if I see bugs?

Occasionally bugs might decide to visit your tomato plants. You will mainly see aphids who usually find their way into homes by hitching a ride on clothing or cut flowers. They are clever about hiding under leaves and in the joints between leaves and plant stems, so they can be difficult to see at first.

Initial signs that you have bugs are either unhealthy-looking plants or a sticky substance on your AeroGarden's *Grow Surface*.

To identify the bugs, we recommend you visit either www.whatsthatbug.com or the entomology (bug) department at Texas A&M University at <http://vegipm.tamu.edu/imageindex.html>.

This is the easiest way we've found to get rid of bugs:

- 1 Remove the *Bowl* from the *Base*.
- 2 Carefully lift the entire *Seed Pod* and plant out of the *Grow Surface*.
- 3 Turn the plant upside down in a sink and gently run room temperature water over the underside of the leaves to rinse the bugs off.
- 4 Check your plant for any remaining bugs – rinse again if necessary – and then return the plant and *Seed Pod* to the AeroGarden.
- 5 Check all surrounding plants to make sure the bugs haven't spread. If they have, follow the above steps with any other buggy plants.
- 6 Replace *Bowl* onto the *Base*.

(Continued on next page)

Troubleshooting *(Continued)*

How do I take care of my Garden when I go out of town?

Add water to raise the level up to “*Fill To Here*”. A newly planted Garden with *Domes* removed may not need care for up to 2 weeks. However, if your Garden is mature and you will be out of town for several days, we recommend you make arrangements for someone to care for your Garden while you are away.

You may want to set your lights to go on at night for added home security while you are away. See “*Setting Your Light Timer*” on page 29 for instructions.

Shouldn't water always be flowing over my *Seed Pods* and plant roots?

Yes and no. When you selected “*Tomatoes/Peppers*” on your *Smart Garden Control Panel* you selected a setting that has been specially designed to optimize

the growth of tomato plants by regulating the flow of water to the roots of your plants.

On the “*Tomatoes/Peppers*” setting, the AeroGarden moves water through the *Seed Pods* whenever the lights are on, and for an additional 4 hours when the lights are off to achieve maximum growth and flavorful tomatoes.

If your lights are on and the water isn't flowing in your AeroGarden, please check the following:

- Is the *Lamp Arm* fully inserted into the *Base*? (see your Quick Start Guide, page 1, step 1C).
- Is the *Bowl* firmly seated in the *Base*? (see your Quick Start Guide, page 2, step 1G).
- If the water still isn't flowing, you may have a broken pump. Contact Customer Service at www.aerogrow.com.

My Tomato garden doesn't look healthy. What can I do?

If you are concerned about the health of your garden, please go through the following before calling Customer Service...

- Keep the lights as close to your plants as possible, without the leaves touching the bulbs.
- Follow the pruning instructions in the *Prune Tomato Plants* section of this guide.
- Follow the pollinating instructions in the *Pollinate Tomato Flowers* section of this guide.
- Don't use softened or un-filtered well water.
- Continually harvest ripe tomatoes.

What can I do to reduce the sound of water dripping from the *Seed Pods* into the *Bowl*?

Keeping the water level in the *Bowl* up to “*Fill To Here*” will help reduce the sound of dripping water. You can further reduce the dripping sound by wrapping or tying a string around the post of each *Plant Spacer* and allow it to extend into the water. The water will run down these strings instead of dripping directly into the *Bowl*. As your plants grow and the roots reach the water in the *Bowl*, the dripping noise will go away completely.

Tomato Garden Checklist

Here's a summary of what you need to do to ensure your Tomato Garden's growing success!



Remove Domes (About 5 days after Planting)

When plants emerge, remove the *Domes*.



Thin Plants (About 10 days after Planting)

Thin tomato plants to leave only ONE healthy plant in each *Seed Pod*.



Add Water (Ongoing)

When "Water Level Low" light blinks, add water.



Add Nutrients (Every 2 weeks)

When the "Add Nutrient" light blinks, add 2 nutrient tablets from the clear bag labeled "Growing Nutrients" and add water to raise the level up to "Fill To Here".



Prune Tomato Plants (Ongoing – after 4-5 weeks)

1st Pruning – A one-time pruning at 4-5 weeks
Horizontal Pruning – Ongoing pruning to control horizontal spreading of plant stems.
Vertical Pruning – Ongoing pruning to keep plants from growing into the *Lamp Hood*.



Pollinate Flowers (Ongoing – after 4-5 weeks)

When flowers appear, begin pollinating plants every other day.

Preparing for Your Next Garden

After the final harvesting of your tomatoes:

- 1 Unplug the AeroGarden.
- 2 Carefully remove the *Bowl* and *Grow Surface* from the *Base* and bring to a sink.
 - Set the *Base* and *Lamp Hood* aside.

NEVER SUBMERSE BASE AND CONTROL PANEL IN WATER.



- 3 Remove the *Grow Surface* from the *Bowl* and place on a counter near the sink.
- 4 Empty contents of *Bowl* into sink.



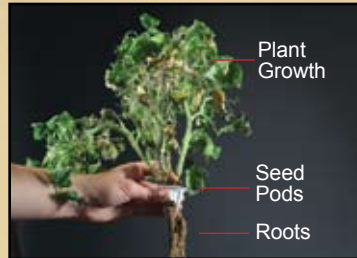
(Continued on next page)

! Do not pour the water onto your houseplants. The nutrient mixture may be too concentrated for them.

Preparing for Your Next Garden *(Continued)*

5 Remove *Seed Pods* and roots from *Grow Surface*.

- Pull the *Seed Pods* out of the *Grow Surface* openings.
- Throw away *Seed Pods* and plant debris (plant growth and roots). These cannot be reused. If you compost, the plant debris can be composted.



6 Rinse and clean the *Pump Stand* and *Pump Filter*.

- Use a soft scrub brush to clean tangled roots from the *Pump Stand*.
- Remove the *Pump Filter* from the *Pump Stand*. Gently scrub the roots from the *Pump Filter*.
- Place the *Pump Filter* back into the *Pump Stand*.



After cleaning, there may still be a few roots in your Pump Stand or Pump Filter. This will not affect the operation of your AeroGarden.



7 Clean the *Bowl* and *Grow Surface*.

- Use a soft cloth or sponge to thoroughly wipe the *Bowl* and *Grow Surface*. A mild soap may be used if desired, but rinse thoroughly.

8 Sanitize your AeroGarden.

- Fill *Bowl* 3/4 full with water.
- Add 1 cup of chlorine bleach (example: Clorox).
- Replace *Grow Surface* on *Bowl*, place *Bowl* on *Base* and plug in AeroGarden for 1-2 minutes.
- Unplug AeroGarden and empty bleach water from *Bowl*.
- Refill *Bowl* with tap water and replace on *Base*.
- Plug in and run AeroGarden for 1-2 minutes.
- Unplug AeroGarden and empty water from *Bowl*.

9 Towel dry the *Bowl* and *Grow Surface* before putting them back together and setting them back onto the *Base*.

10 Your AeroGarden is now ready for replanting.

11 If you are going to store your AeroGarden before replanting, remove the back-up battery from the underside of the *Base*. If you need to replace the back-up battery, use any CR2032 3-volt lithium battery.

! Use only water and mild soap when cleaning your AeroGarden (except when Sanitizing - Step 8). Do not use abrasive cleaners or run through the dishwasher.



AeroGrow International, Inc.
P.O. Box 18450
Boulder, CO 80308

If you have any questions please feel free to contact our
Customer Service Department at:

www.aerogrow.com

1-800-GROW-NOW (1-800-476-9669)